

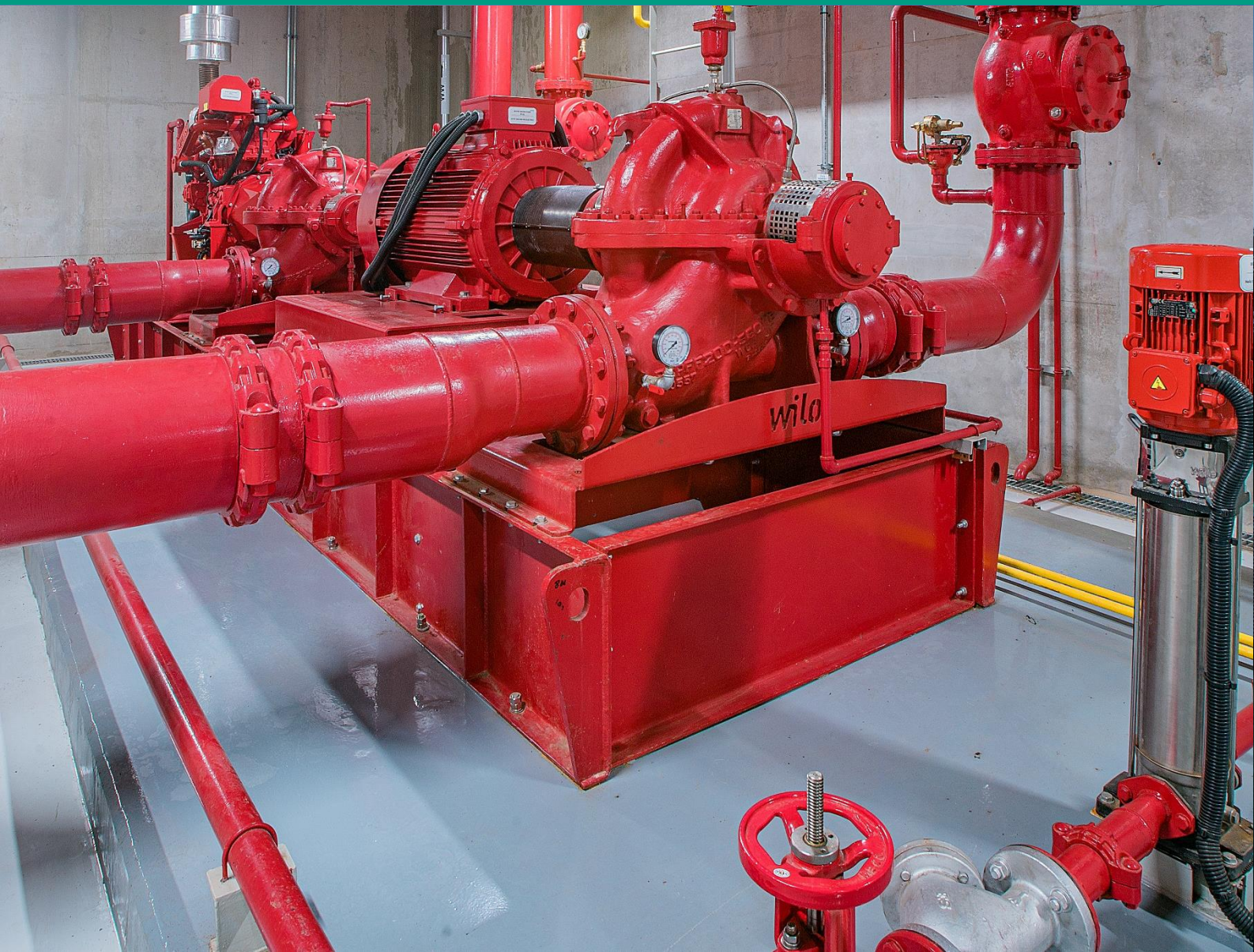
Pioneering for You

**wilo**

## Wilo – Fire Pumps

# Ensuring Safety with Advanced Fire Pumps

The Ultimate Solution for The Building Services and Industrial





# The Significance of Fire Safety in Buildings and Plants

**NFPA 20 Standards Compliant,  
UL Listed, FM Approved  
Fire Pressure Boosting Systems**

Today, fire safety has become an accepted and overemphasized issue throughout the world. Fire extinguishing systems are one of the top priorities in commercial, industrial building and infrastructure facility project such as schools, hospitals, malls, airports, factories, warehouses, dams, treatment facilities, etc.

# Pump technology for the future.

## WILO PROFILE

The Wilo Group is one of the world's leading premium providers of pumps and pump systems for the building services, water management and industrial sectors. In the past decade, we have developed from a hidden champion into a visible and connected champion. Today, Wilo has around 8,000 employees worldwide.

## WILO INDONESIA

Wilo Indonesia is a subsidiary of Wilo SE, entered into Indonesia in 2008. At present, there are 4 branches in Indonesia with over 50 employees. We focus on developing and promoting the products and solutions that can meet the local requirements of Indonesia customers.

Wilo has rooted its products and services in diverse applications, such as heating, air conditioning, refrigerating, sewage treatment, water supply equipment, etc. The desires and requirements of our customers and users are optimally met every day with pioneering developments and solutions, high-efficiency products, tailored solutions for special applications and for industry and expensive service offerings.

**This is what we mean by "Pioneering for You".**



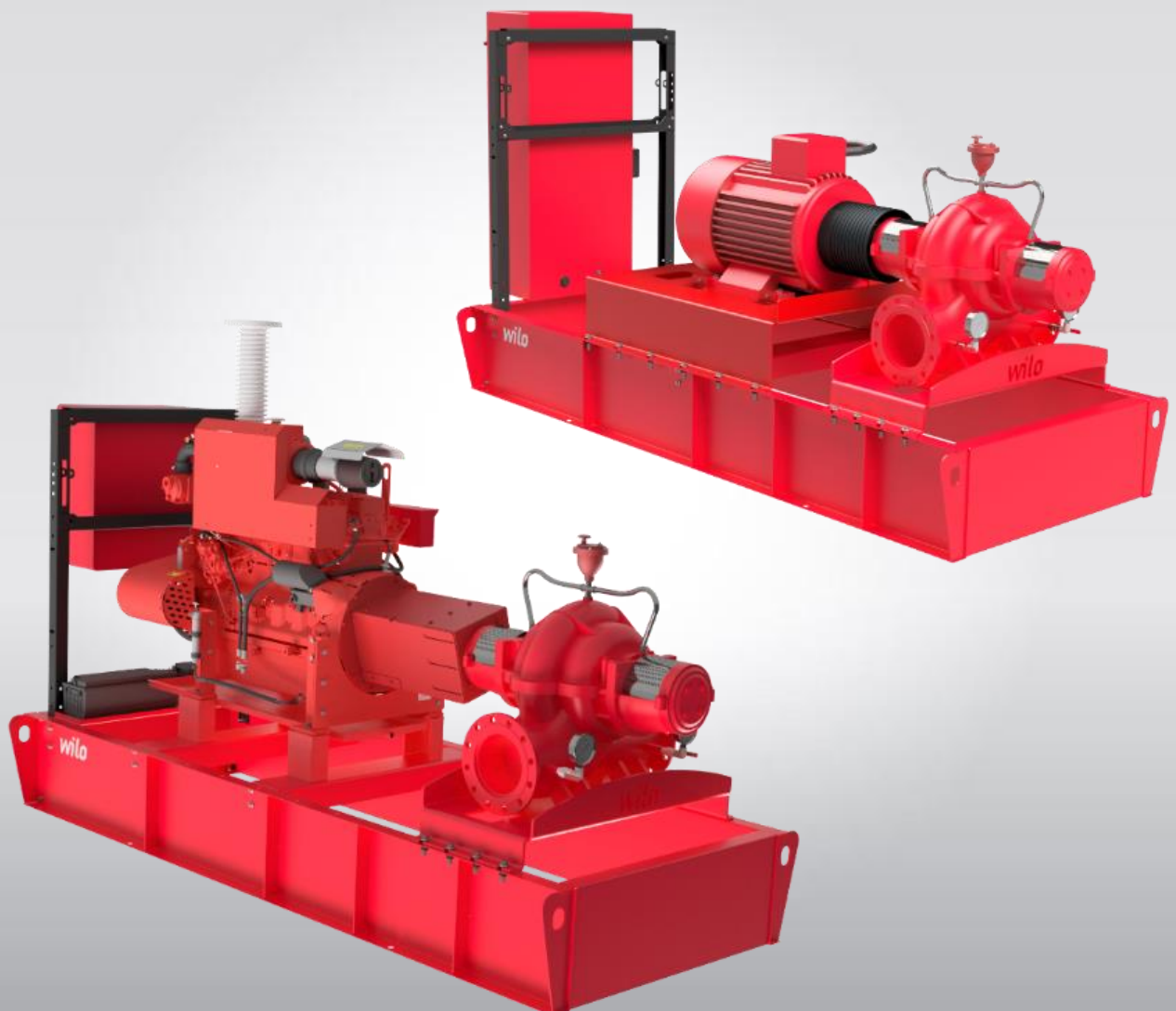
Member of

**German Water  
Partnership**

## UL Listed/FM Approved

More safety for your fire protection planning.

With the Wilo Fire Fighting Pump, our engineers have developed a completely new complete system for use in sprinkler systems. Our entire knowledge is in every detail in terms of water and extinguishing water supply. The result is a technology that you as a planner can rely on at all times.



# UL Listed Certificate

## CERTIFICATE OF COMPLIANCE

**Certificate Number** 20180730-EX15489  
**Report Reference** EX15489-20090404  
**Issue Date** 2018-JULY-30

**Issued to:** WILO Mather and Platt Pumps Pvt. LTD  
Survey. No. 162  
Mumbai - Pune Road  
Chinchwad, Pune Maharashtra 411019 INDIA

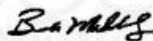
**This is to certify that representative samples of** CENTRIFUGAL FIRE PUMPS, SPLIT CASE  
Centrifugal fire pumps, split-case, single-stage type,  
6/8 CME MK-II, SCPFF 125-300 HA, SCPFF 150-300 HA,  
SCPFF 200-560 HB, SCPFF 80-300 DV,  
SCPFF 125-360 DV

Have been investigated by UL in accordance with the Standard(s) indicated on this Certificate.

**Standard(s) for Safety:** UL 448, Standard for Pumps for Fire-Protection Service  
**Additional Information:** See the UL Online Certifications Directory at [www.ul.com/database](http://www.ul.com/database) for additional information

Only those products bearing the UL Certification Mark should be considered as being covered by UL's Certification and Follow-Up Service.

Look for the UL Certification Mark on the product.



Bruce Mahrenholz, Director North American Certification Program  
UL LLC

Any information and documentation involving UL Mark services are provided on behalf of UL LLC (UL) or any authorized licensee of UL. For questions, please contact a local UL Customer Service Representative at <http://ul.com/about/locations/>



# FM Approved Certificate

   <p>Member of the FM Global Group</p>	<h2 style="text-align: center;">Certificate of Compliance</h2> <p style="text-align: center;">This certificate is issued for the following:</p> <p style="text-align: center;"><b>Centrifugal Fire Pumps - Axial Split-Case Type</b></p> <p style="text-align: center;"> <b>SCPFF 80-300 DV</b>  <b>SCPFF 125-360 DV</b>  <b>6/8 CME MK-II</b>  <b>SCPFF 125-300 HA</b>  <b>SCPFF 150-300 HA</b>  <b>SCPFF 200-560 HB</b> </p> <p style="text-align: center;"><b>Prepared for:</b></p> <p style="text-align: center;"> <b>WILO Mather and Platt Pumps Pvt. Ltd.</b>          Survey No. 162          Mumbai - Pune Road          Chinchwad, Pune          411019, Maharashtra          India       </p> <p style="text-align: center;">FM Approvals Class: 1311, dated January 2018</p> <p style="text-align: center;">         Approval Identification: 0003062738      Approval Granted: October 30, 2018       </p> <p style="text-align: center;">To verify the product continues to be Approved please refer to <a href="http://www.approvalguide.com">www.approvalguide.com</a>.</p> <p style="text-align: center;">Said Approval is subject to satisfactory field performance, continuing Surveillance Audits, and strict conformity to the constructions as shown in the Approval Guide, an online resource of FM Approvals.</p> <div style="text-align: center;">           _____          David B. Fuller          VP, Manager - Fire Protection          FM Approvals          1151 Boston-Providence Turnpike          Norwood, MA 02062 USA       </div>
--	--

FM Approved Certificate from India

   <p>Member of the FM Global Group</p>	<h2 style="text-align: center;">Certificate of Compliance</h2> <p style="text-align: center;">This certificate is issued for the following:</p> <p style="text-align: center;"><b>Centrifugal Fire Pumps</b> (Axial Split-Case Type) Packaged at WILO Systems Italia S.r.l.</p> <table border="0" style="width: 100%;"> <tr> <td style="width: 50%; vertical-align: top;"> <p style="text-align: center;"><b>Manufactured By:</b></p> <p style="text-align: center;"> <b>WILO Mather and Platt Pumps Pvt. Ltd.</b>            Sur. No. 162, Mumbai Pune Road            Chinchwad, Pune 411019 India         </p> </td> <td style="width: 50%; vertical-align: top;"> <p style="text-align: center;"><b>Packaged By:</b></p> <p style="text-align: center;"> <b>WILO Systems Italia S.r.l.</b>            Viale Maestri del lavoro, 2A            70100 - Bari (BA) - Italy         </p> </td> </tr> </table> <p style="text-align: center;">FM Approvals Class: 1311 (January 2018)</p> <p style="text-align: center;">         Approval Identification: PR452471      Approval Granted: July 23, 2019       </p> <p style="text-align: center;">To verify the product continues to be Approved please refer to <a href="http://www.approvalguide.com">www.approvalguide.com</a>.</p> <p style="text-align: center;">Said Approval is subject to satisfactory field performance, continuing Surveillance Audits, and strict conformity to the constructions as shown in the Approval Guide, an online resource of FM Approvals.</p> <div style="text-align: center;">           _____          David B. Fuller          VP, Manager - Fire Protection          FM Approvals          1151 Boston-Providence Turnpike          Norwood, MA 02062 USA       </div>	<p style="text-align: center;"><b>Manufactured By:</b></p> <p style="text-align: center;"> <b>WILO Mather and Platt Pumps Pvt. Ltd.</b>            Sur. No. 162, Mumbai Pune Road            Chinchwad, Pune 411019 India         </p>	<p style="text-align: center;"><b>Packaged By:</b></p> <p style="text-align: center;"> <b>WILO Systems Italia S.r.l.</b>            Viale Maestri del lavoro, 2A            70100 - Bari (BA) - Italy         </p>
<p style="text-align: center;"><b>Manufactured By:</b></p> <p style="text-align: center;"> <b>WILO Mather and Platt Pumps Pvt. Ltd.</b>            Sur. No. 162, Mumbai Pune Road            Chinchwad, Pune 411019 India         </p>	<p style="text-align: center;"><b>Packaged By:</b></p> <p style="text-align: center;"> <b>WILO Systems Italia S.r.l.</b>            Viale Maestri del lavoro, 2A            70100 - Bari (BA) - Italy         </p>		

FM Approved Certificate from Italy

# WILO FireSet UL/FM

## Flexible planning of fire-fighting systems

### Product Features



#### 1 Design

Compact design that integrates pump and switchgear with UL/FM approved components



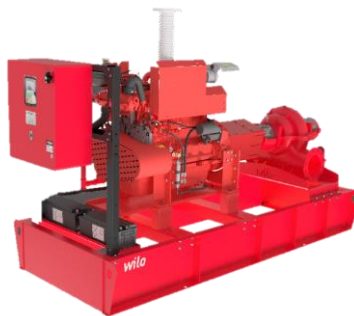
#### 2 Installation

Robust axially split case pumps to cover the main needs of commercial or industrial buildings



#### 3 Equipment

Elastic coupling with misalignment compensator for electric pump and universal coupling complies with UL requirements and is accepted by FM for diesel pump



#### 4 Power supply

Main pump with power reserve based on 150 % of the rated volume flow, available with electric motor or diesel engine



#### 5 Versatility

Product configurations available on request, depending on installation conditions



#### 6 Maintenance

Safe and easy installation and maintenance



### Scope of Supply

#### Diesel System

- Pumpset with diesel engine driver
- Control Panel (GPD)
- Pressure gauges
- Air relief valves
- Circulation relief valves
- Batteries
- Fuel tank

#### Electric System

- Pumpset with electric motor driver
- Control Panel (GPY)
- Pressure gauges
- Air relief valves

#### Jockey System

- Pumpset with mounted electric motor driver
- Control Panel (JFA)

# UL/FM Approved Pump Design

## Type Key

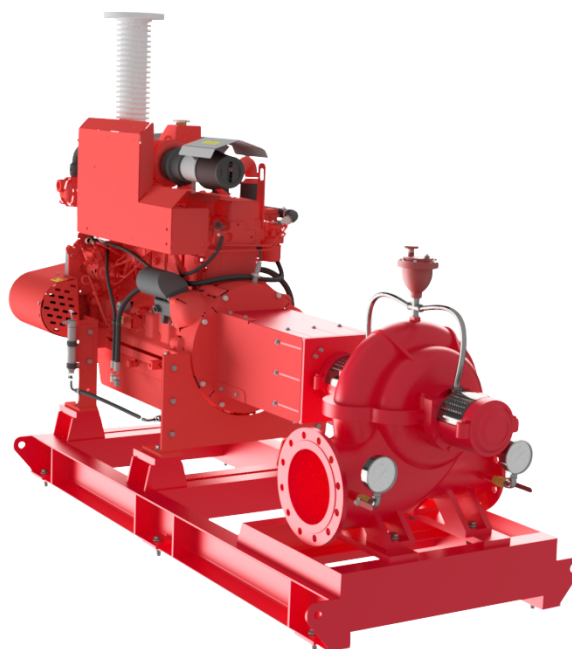
### SCPFF 80-300 DV

<b>SCPFF</b>	Pump series
<b>80</b>	Nominal outlet diameter (mm)
<b>300</b>	Nominal impeller diameter (mm)
<b>DV</b>	Hydraulic Variant

- DV: Double Volute
- HA: Hydraulic type "A"
- HB: Hydraulic type "B"

### 6-8 CME MKII

<b>6</b>	Nominal outlet diameter (inch)
<b>8</b>	Nominal inlet diameter (inch)
<b>CME MKII</b>	Pump Series



## Pump Material

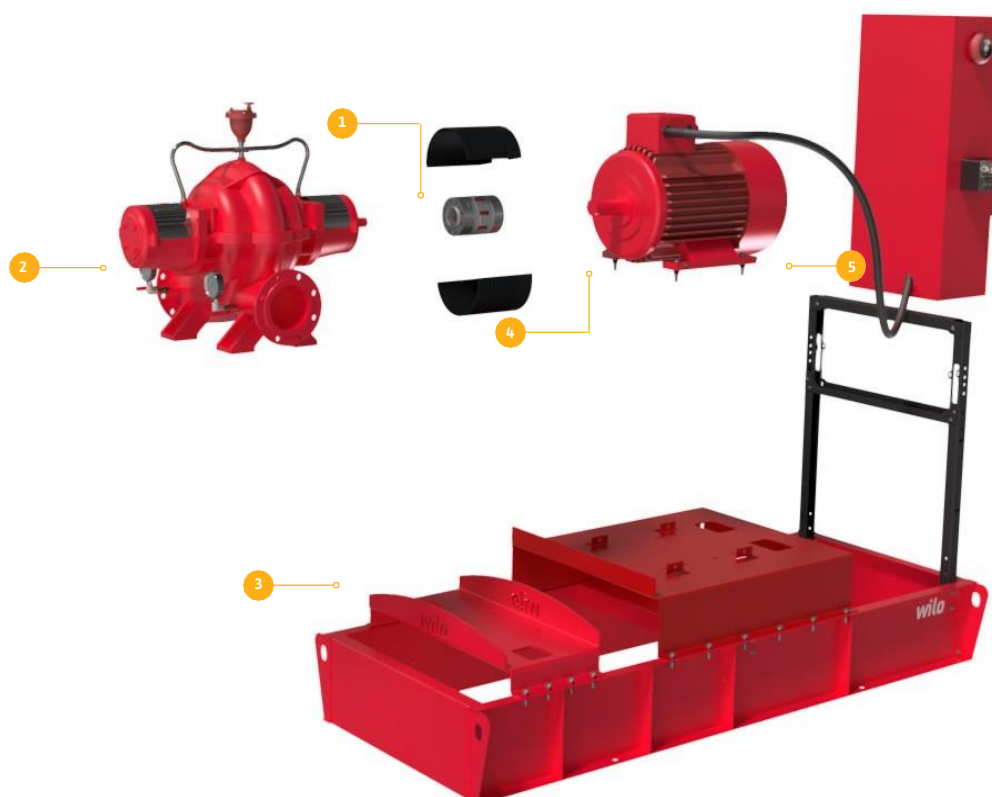
<b>Casing</b>	Cast Steel (A 216 Gr)
<b>Impeller</b>	Bronze Casting (G-CuSn10)
<b>Shaft</b>	Stainless Steel (SS410)
<b>Shaft Sleeve</b>	Stainless Steel (SS304)
<b>Wearing Ring</b>	Bronze Casting (G-CuSn10)
<b>Sealing</b>	Gland Packing

## Pump Specification

<b>Max Operating Pressure</b>	16-25 bar
<b>Operating Temperature</b>	10-105 °C
<b>Pump Type</b>	Axially split case
<b>Lubrication</b>	Grease
<b>Direction of Rotation</b>	Clockwise (Optionally counter-clockwise)

Pump Model	Pump Connection (inch)	Rated Capacity (USGPM)	Rated Net Pressure Range (psi)	Rated Net Pressure Range (m)	Approx Speed (RPM)
SCPFF 80 - 300 DV	3 x 4	500	85 - 176	60 - 120	2980
SCPFF 125 - 360 DV	5 x 6	750	176 - 280	122 - 190	2980
6 - 8 CME MKII	6 x 8	750	69 - 102	49 - 72	1480
SCPFF 125 - 300 HA	5 x 6	750	123 - 199	86 - 140	2980
6 - 8 CME MKII	6 x 8	1000	65 - 100	46 - 70	1480
SCPFF 125 - 360 DV	5 x 6	1000	162 - 268	112 - 185	2980
SCPFF 150 - 300 HA	6 x 8	1000	134 - 173	94 - 122	2980
6 - 8 CME MKII	6 x 8	1250	60 - 98	42 - 68	1480
SCPFF 150 - 300 HA	6 x 8	1250	130 - 171	91 - 120	2980
6 - 8 CME MKII	6 x 8	1500	93	65	1480
SCPFF 150 - 300 HA	6 x 8	1500	122 - 163	86 - 115	2980
SCPFF 200 - 560 HB	8 x 10	2000	100 - 153	70 - 108	1480
SCPFF 200 - 560 HB	8 x 10	2500	99 - 149	69 - 105	1480

# UL/FM Approved Pump Coupled with Electric Motor



## Coupling

- 1 → KTR elastic coupling, accepted by FM
- Maximum operational reliability (breakage test)
- Prevention of shaft stress through compensation systems

## Fire pump

- 2 → UL & FM compliance with NFPA 20 as standard
- Static and dynamic characteristics tested directly in production by Wilo
- Designed to ensure high efficiency, and easy installation and maintenance operations

## FM Approval

- 3 → The FM logo ensures that the pump is assembled with FM- approved components in a factory authorised by FM

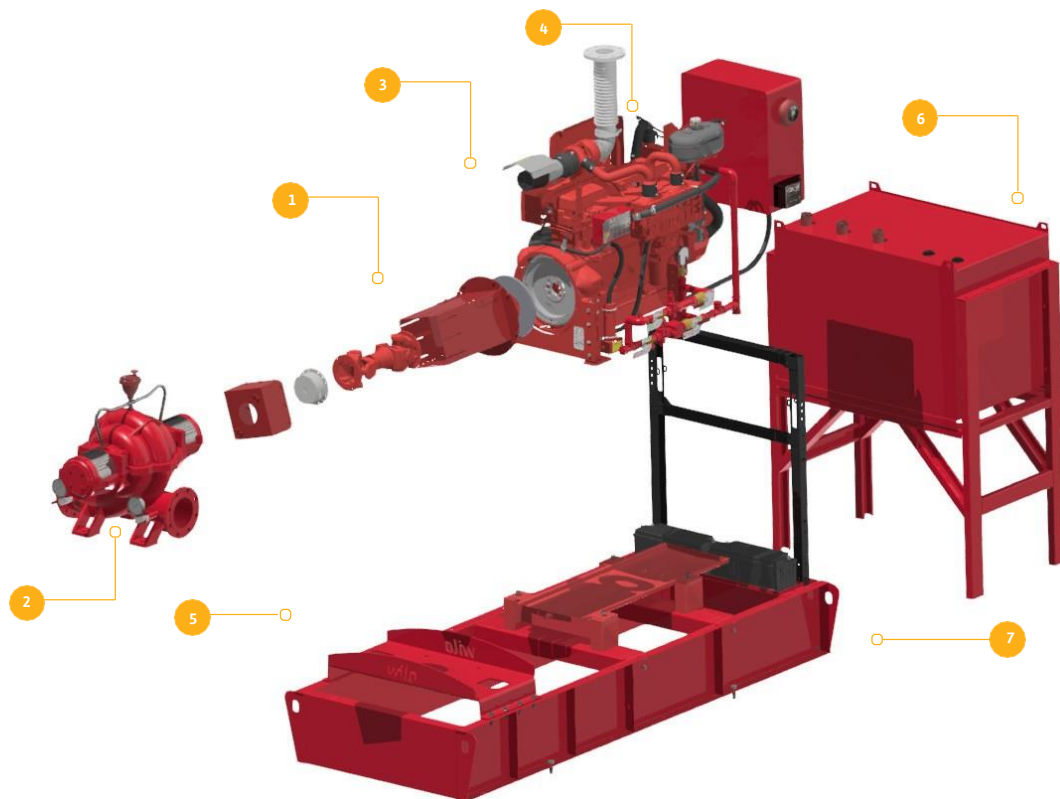
## Electric Motor

- 4 → UL-compliant motor, accepted by FM
- Power corrected with safety factor and high reliability of components

## Switchgear

- 5 → Switchgear components are UL/FM with CE marking as standard.
- Designed in full accordance with NFPA 70 (NEC) electrical standards
- Logic of the control microprocessor based on recording of the sequence of events following pressure changes as standard.
- Protection class IP54
- Star-delta starting

# UL/FM Approved Pump Coupled with Diesel Engine



## Coupling

- 1 → Universal coupling compliant with UL requirements and accepted by FM
- Maintenance-free with maximum operational reliability
- Shaft may be moved in axial, radial and angular directions

## Fire pump

- 2 → UL & FM compliance with NFPA 20 as standard
- Static and dynamic characteristics tested directly in production by Wilo
- Designed to ensure high efficiency, and easy installation and maintenance operations

## Diesel Engine

- 3 → UL/FM-compliant diesel engine with silencer for industrial installation and flexible drainage
- Power revised with safety factor in accordance with NFPA 20
- Engine cooling is ensured through a dedicated heat exchanger

## Switchgear

- 4 → Switchgear components are UL/FM with CE marking as standard
- Protection class IP54
- Simplified installation and maintenance procedures

## Baseplate

- 5 → Standard base plate consisting of a sturdy steel frame to facilitate on-site operations
- Paintwork with RAL 3000 colour
- Easy transport thanks to the side eyebolts

## Combustible Tank

- 6 → Designed and dimensioned in accordance with NFPA 20 standard
- Single-wall tank as standard

## Battery Pack

- 7 → Easy transport thanks to the side eyebolts
- Two lead batteries (12 V or 24 V) provide improved reliability
- Dimensioned in accordance with NFPA 20 standard

# Open Lineshaft Vertical Turbine



**wilo**

## MOTOR STOOL

## DISCHARGE

- Stainless steel top shaft
- Optional fabricated steel heads available
- Headshaft coupling connects top shaft to headshaft
- High profile head allows for ease in servicing packing
- Integral drip basin collects leakage from stuffing box
- Spacer couplings are available for use with VSS motors
- Heavy duty ASTM A48 class 30 cast iron construction standard

## DISCHARGE CASE

- Two discharge bearings for additional support
- Heavy duty ductile iron construction standard
- Additional vanes for minimizing turbulence, thus improving efficiency

## STRAINER

- Basket or cone strainers are available upon request
- Stainless steel materials are available
- Vortex suppressors can be supplied to minimize inlet stress



## MOTOR

- Optional right angle gear drives
- Vertical hollowshaft or solid shaft
- Can be supplied with a non-reverse ratchet
- Top adjusting nut allows user to adjust lateral setting
- Bearing designed to carry thrust loads and is oil lubricated
- Available in WP-I, WP-II, TEFC & Explosion-Proof enclosures

## COLUMN ASSEMBLY

- Larger diameter, steel shaft material
- Heat straightened shafting standard
- Heavy wall carbon steel construction
- Product lubricated lineshaft bearings
- Overall length is engineered to customer specifications
- Cast 304 stainless steel bearing retainer with cutlass rubber insert
- Threaded column is standard through 12" and flanged for larger sizes

## BOWL ASSEMBLY

- Bronze bowl bearings standard
- 416 stainless steel bowlshaft is standard
- Impellers are expertly machined to customer specifications
- Heavy duty ASTM A48 class 30 cast iron construction standard
- Heavy duty grease-packed suction case bearing with sand collar
- Diffuser bowls through 16" have standard vitreous enamel lining
- Heavy wall ASTM A48 class 30 cast iron construction with 304 stainless steel impellers
- Tapered impeller collets are used on bowls through 16" with keyed impellers used on larger sizes

# Range of Pumps

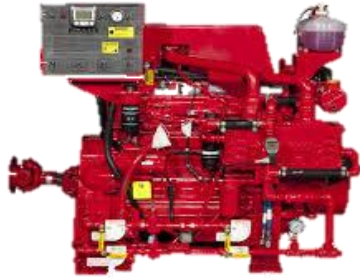


**wilo**  
A WILO COMPANY

Pump Model	Stage(s)	Rated Capacity (USGPM)	Rated Net Pressure Range (psi)	Rated Net Pressure Range (m)	Approx Speed (RPM)
12MC	3-10	500	49-238	30-160	1450
			69-349	49-240	1760
14HCR	3-5	750	63-334	43-230	1450
			82-174	56-120	1760
14MCR	3-6	750	125-266	86-180	1450
			79-226	54-150	1760
14HCR	3-5	1000	119-343	82-240	1450
			77-166	53-110	1760
14MCR	3-6	1000	114-258	78-180	1450
			72-209	50-150	1760
14HCR	3-5	1250	112-323	80-220	1450
			73-165	50-110	1760
14MCR	6	1250	108-148	75-100	1450
			192	130	1760
14HCR	3-5	1500	298	200	1450
			71-165	50-110	1760
16LC	2	1500	103-249	70-170	1450
			51-63	35-40	1760
16LC	3	1500	77-95	53-65	1450
			102-112	70-77	1760
16LC	4	1500	128-140	90-100	1450
			79-95	54-65	1760
16LC	5	1500	118-143	80-100	1450
			158-191	110-130	1760
14HCR	5	1500	197-213	130-145	1450
			234	160	1760
16LC	2	2000	47-58	30-40	1450
			70-88	50-60	1760
16LC	3	2000	94-103	65-70	1450
			117-129	80-90	1760
16LC	4	2000	75-90	52-62	1450
			112-135	80-93	1760
16LC	5	2000	150-180	103-124	1450
			187-202	130-140	1760
19MC	1	2000	43-49	30-34	1450
			86-92	60-64	1760
19MC	2	2000	67-74	50-51	1450
			133-141	92-98	1760
16LC	2	2500	70-84	48-58	1450
			106-126	73-87	1760
16LC	3	2500	141-168	97-120	1450
			176-190	120-130	1760
19MC	1	2500	41-48	28-33	1450
			81-89	56-60	1760
19MC	2	2500	62-72	43-50	1450
			125-134	86-92	1760
19HC	2	3000	69-77	48-53	1450
			53-62	36-43	1760
19MC	1	3000	107-115	74-79	1450
			84	58	1760
19MC	2	3000	59-70	40-48	1450
			119-129	82-89	1760
19HC	2	3500	72	49	1450
			51-61	35-42	1760
19MC	2	3500	101-112	70-77	1450
			123	85	1760
19HC	2	4000	68	47	1450
			106	73	1760
19MC	2	4000	116	80	1450
			101	70	1760
19HC	2	4500			1450
					1760

# UL/FM Approved Pump Driver

## Diesel Engine & Electric Motor



**CLARKE®**

- Listed engine driver
- Heat exchanger and radiator engine cooling system
- Build in cooling loop on heat exchanger cooling system
- Low speed and high speed rotation
- Build in DC panel
- Build in silencer with industrial clamped
- Exhaust guarding, jacket water heater, and stub shaft as optional accessories (standard accessories on several types)



**SIMOTOP marathon®**  Motors

- Listed motor driver
- Low speed and high speed rotation (1500–2900 rpm)
- Very wide range of power (depend on rotational speed)
- IP55

# UL/FM Approved Built Up Controllers

## UL Listed & FM Approved



**TORNA**  
TECH



Product	Model	Details	Installation	Comply to Standard
Diesel Fire Pump Controller	GPD	12 or 24 VDC	Wall Mounting	UL Listed & FM approve
Electric Fire Pump Controller	GPA GPY GPR GPS GPW	Across the line starter Wye-Delta open starter Autotransformer starter Electronic soft starter Wye-Delta closed starter	Rigid base and Wall Mounting	UL Listed & FM approve
Jockey Pump Controller	JP3 JPY	Across the line starter Wye-Delta open starter	Wall Mounting	UL Listed

## NFPA 20

# More safety for your fire protection planning.

Our engineers have created a state-of-the-art system, the Wilo Fire Fighting Pump, designed specifically for utilization in sprinkler systems. We have incorporated our extensive knowledge and expertise in water and extinguishing water supply into every aspect of this comprehensive system. As a result, you can rely on this technology as a planner to be dependable and consistent at all times.



# WILO FireSet NFPA 20

End suction fire pump is the perfect solution for small capacity fire applications

## Advantages

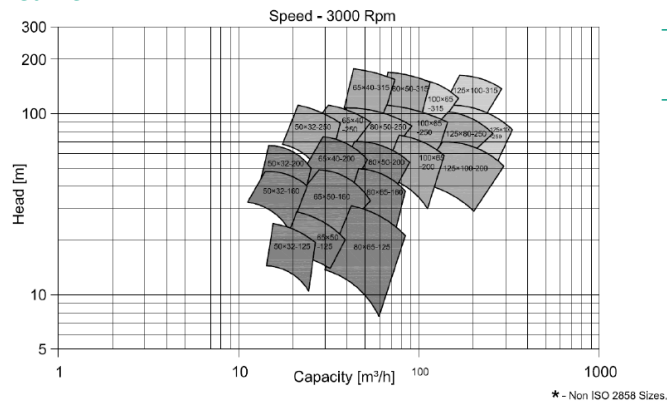
- More economical than split case pump model
- Back pullout design for easy maintenance
- Self venting centerline discharge
- Low NPSH requirements

## Materials

Casing	Cast Iron, Stainless Steel, Duplex Stainless Steel
Impeller	Cast Iron, Bronze, Stainless Steel, Duplex Stainless Steel
Shaft	Stainless Steel, Duplex Stainless Steel

Model	MISO	PISO
Flow (USGPM)	500 – 1000	
Head (m)	70 – 160	100 – 165
Speed	2 poles	

## Curve



## Scope of Supply

- Pumpset with electric motor driver and/or engine driver
- Local Controller refer to NFPA20 Std.

## Wilo – MISO



# WILO FireSet NFPA 20

Split case fire pumps, perfectly suited for use in new construction, packaged fire systems and retrofit installations

## Advantages

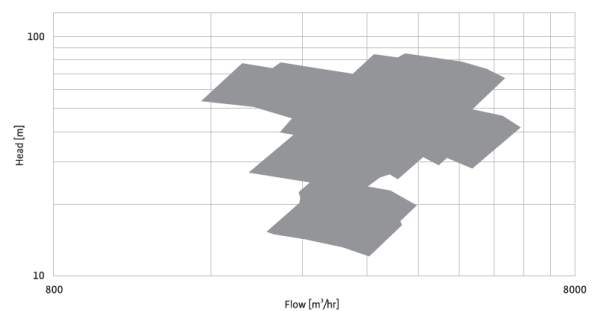
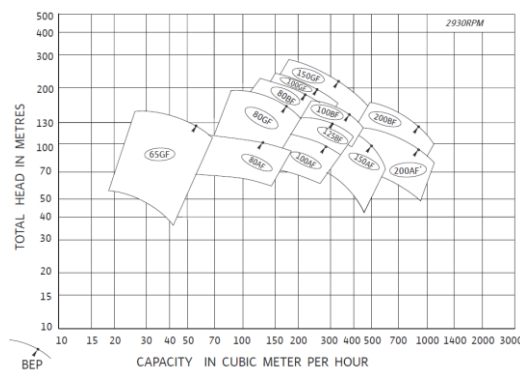
- The oversized stainless steel shaft is capable of running for at least 5000 hours, as rated
- Option for double volute and –suction design for excellent operating efficiency and high flow performance
- Sealed, permanently –greased bearings prevent seizing

## Materials

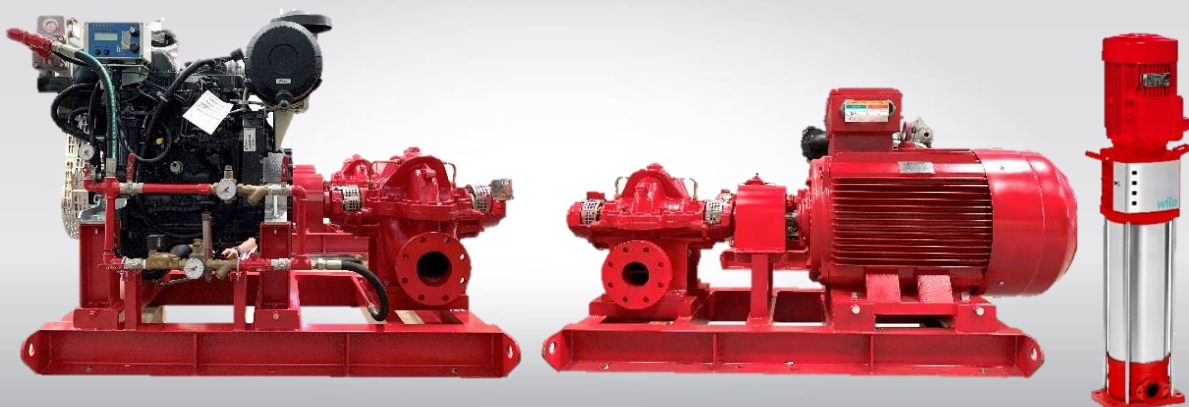
Casing	Cast Iron, Stainless Steel, Duplex Stainless Steel
Impeller	Cast Iron, Bronze, Stainless Steel, Duplex Stainless Steel
Shaft	Stainless Steel, Duplex Stainless Steel

Model	ASP	SCP	HSC
Flow (USGPM)	500 – 2000	500 – 6000	
Head (m)	70 – 220	70 – 250	
Speed	2 poles	4 poles	

## Curve



## Wilo – ASP



# WILO FireSet NFPA 20

Vertical turbine design accommodates various types of water supplies (wells, reservoirs, ponds, streams, storage tanks (above or below ground))

## Advantages

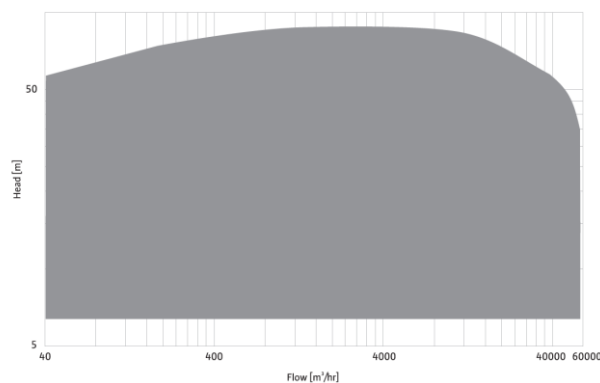
- Variable column length suites differing supply water levels
- The need for priming is eliminated by impellers that are permanently submerged.
- Broad range of capacity and pressure is covered by the available models
- Radiator cooled or heat exchanger cooled option as per the requirement with right angled gear box

## Materials

Casing	Cast Iron, Bronze, Stainless Steel, Duplex Stainless Steel
Impeller	Cast Iron, Bronze, Stainless Steel, Duplex Stainless Steel
Shaft	Stainless Steel, Duplex Stainless Steel
Lubrication	Self/External Lubrication

Model	CNE, VMF
Flow (USGPM)	500 – 6000
Head (m)	70 – 250
Speed	2 poles. 4 poles

## Curve



## Scope of Supply

- Pumpset with electric motor driver and/or engine driver
- Local Controller refer to NFPA20 Std.



# Built Up Controllers



Product	Model	Details	Installation	Comply to Standard
Diesel Fire Pump Controller	GFD	12 or 24 VDC	Wall Mounting	NFPA20
	GPD	12 or 24 VDC		FM/UL Listed
Electric Fire Pump Controller	GFA GFY GFR GFS GFW	Across the line starter Wye-Delta open starter Autotransformer starter Electronic soft starter Wye-Delta closed starter	Wall Mounting	NFPA20
	GPY	Wye-Delta open starter		FM/UL listed
Jockey Pump Controller	JP3 JPY	Across the line starter Wye-Delta open starter	Wall Mounting	UL Listed

# Local Controllers (Refer to NFPA20 Std.)

- Refer to NFPA20 standard of fire pump control panel
- Manufactured locally in Indonesia
- Many types of starter for electric motor control
- Wide standard range for electric motor control panel
- Diesel engine control panel for 12 and 24VDC
- Across the line and Y-Delta starter for jockey pump control panel
- Wide standard range for jockey pump control panel



**EFP Controller**



**DFP Controller**



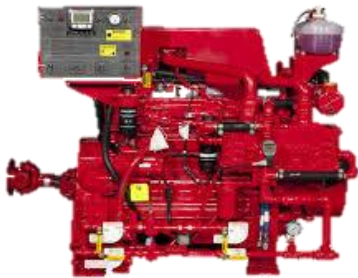
**JP Controller**



# Pump Driver

## Diesel Engine & Electric Motor

### Diesel Engine



- Non-Listed engine driver
- Heat exchanger and radiator engine cooling system
- Build in cooling loop on heat exchanger cooling system
- Low speed and high speed rotation
- Build in DC panel
- Build in silencer

### Electric Motor



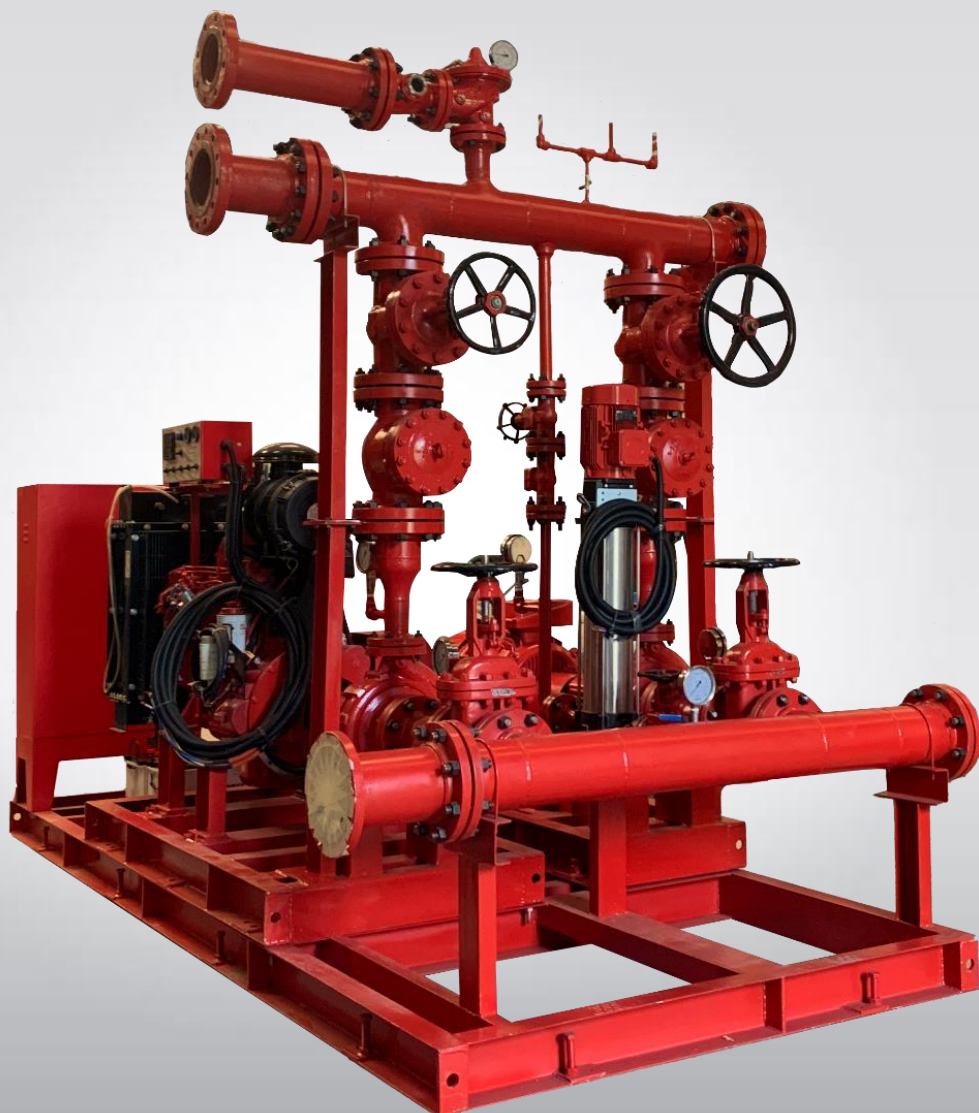
- Non-Listed motor driver
- Low speed and high speed rotation (1500–2900 rpm)
- Very wide range of power (depend on rotational speed)
- IP55

You will receive important information, useful tips, and guidance for your planning quickly and easily from us through our tailored online help. However, if you wish for reliable assistance, you can also contact our Wilo service center. We are available by phone 365 days a year, 24 hours a day – and we even offer a call-back service upon request. For us, service means making your daily work as easy as possible.

## Wilo-FirePack

Comprehensive package easy to install and commission.

To achieve success in construction projects, it's important to prioritize maintaining timelines and controlling costs. Additionally, creating a lasting and valuable building requires appropriate decision-making regarding safety measures such as fire suppression equipment.

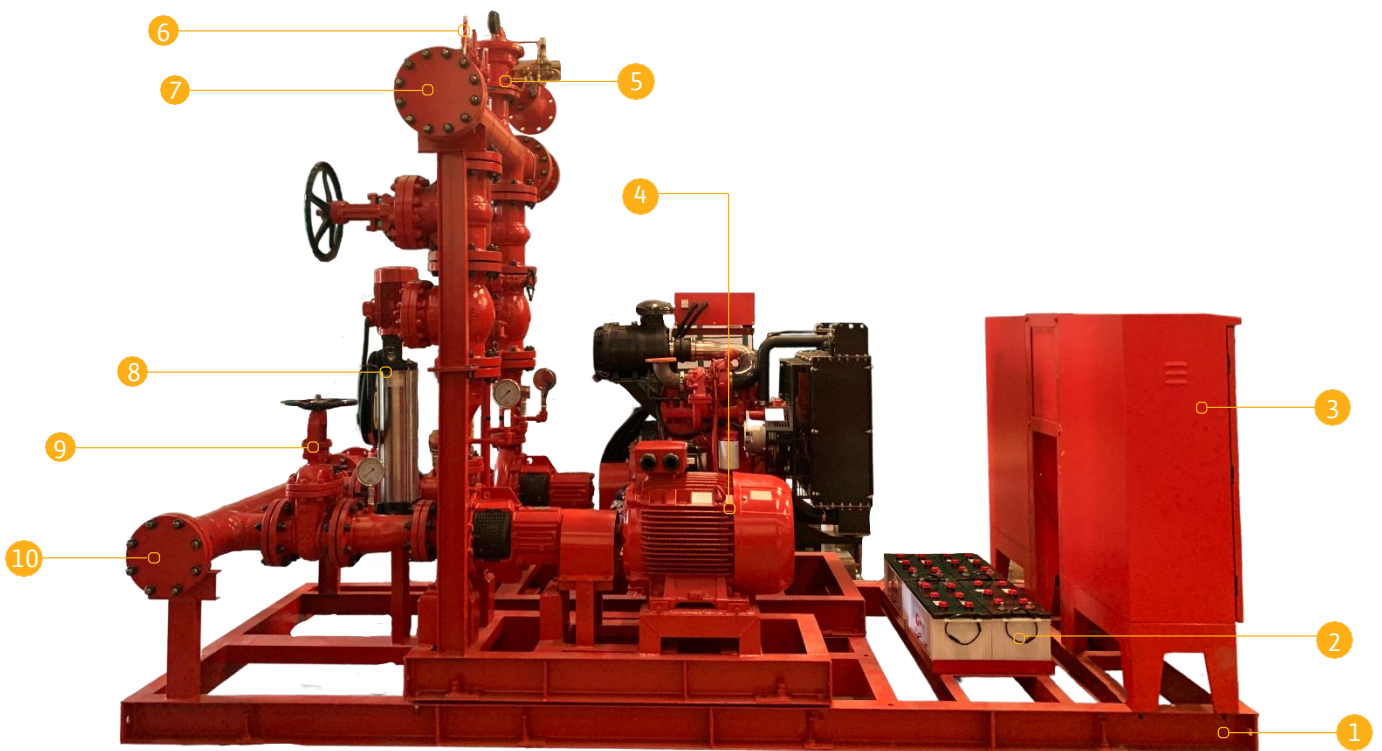


# Wilo-FirePack

**Wilo-FirePack offers designers and contractors a comprehensive and fully integrated solution with a range of unique benefits.**

- Compact design
- Fully-assembled package solution
- All necessary information about the product, such as its specifications, pricing, and drawings, are readily available.
- The pump and motor (and/or engine) are mounted on a sturdy steel base, requiring only one alignment check.

**We provide you one packaged solutions**



1 Main Skid

2 Battery

3 Control Panel

4 Pump

5 Pressure Relief Valve

6 Pressure Sensor

7 Discharge Header Pipe

8 Jockey Pump

9 Suction Gate Valve

10 Suction Header Pipe

## Wilo-Containerized FirePack

Designed for maximum portability and minimum maintenance.

Ingeniously designed to be constructed inside standard shipping containers, making them highly portable and easy to install. With no on-site assembly labor or specialized tools required, connecting the piping and power supply is all that's needed for quick and efficient installation.

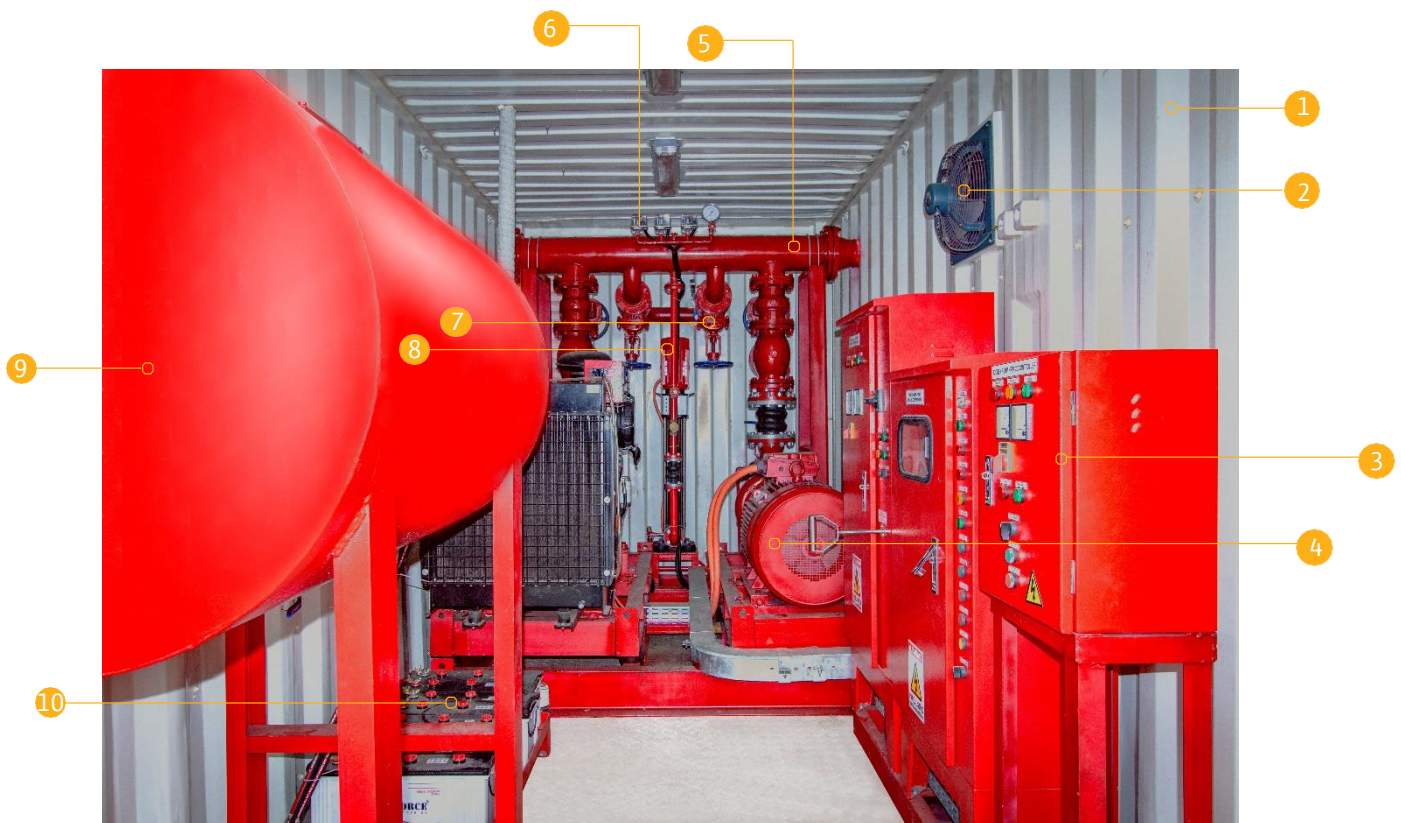


# Wilo-ContainerizedFirePack

Containerized fire systems offer a cost-effective solution and simplify the need for a fire system in a building when compared to other alternatives.

- Easy shipping to deliver anywhere in the world
- Designed with a compact containerized structure, allowing for efficient use of floor space
- Includes both diesel and electric fire pumps to meet the needs of our customers
- Available with 20 ft and 40 ft containers to accommodate varying equipment sizes and requirements
- Ventilation and exhaust fans to maintain internal temperature control.
- Safety and stability are ensured with non-slip, checkered flooring plates.
- Rated for installation in outdoor and/or marine environments, ensuring reliable operation even in challenging conditions.

We provide you one packaged solutions



1 Container

2 Exhaust Fan

3 Control Panel

4 Pump

5 Discharge Header

6 Pressure Sensor

7 Pressure Relief Valve

8 Jockey Pump

9 Fuel Tank

10 Battery

# Wilo-Mobile Fire Pump

## Compact Electric Vehicle Firefighting Pump.

A powerful and versatile solution that has various applications. Whether it's cleaning up after a disaster or providing water for irrigation or training exercises, this solution is an essential piece of equipment for any organization that needs to move quickly and respond to emergencies. Its mobility, high discharge pressure, and stable flow make it an invaluable solution that can save lives and minimize damage in a variety of situations.



# Mobile Fire Pump

This compact and powerful electric vehicle pump is designed to deliver exceptional performance in even the most challenging situations.

- Excellent self-priming capability Up to 9.7m without an auxiliary vacuum pump
- Wide covering range, water can be supplied from more than 1km distance and 250m in vertical direction
- Electric clutch system with central control panel
- Automatic start and stop function
- Automatic switch off during operation upon detecting lack of water supply
- Foam discharge function
- Very simple pump operation
- User friendly and safe

We provide you one packaged solutions



1 Battery

2 Suction Hose with Suction Filter

3 Outlet

4 Pump Controller

5 Engine Controller

6 Oil Entrance

7 Muffler

8 Engine

9 Steering

10 Discharge Hose

# The best service worldwide, that is Wilo service quality!

## Versatile and individually accessible.

With Wilo as your partner, you can not only be sure of choosing high-quality product solutions, but also of benefiting from a comprehensive, worry-free package of well thought-out services. We collaborate to develop a service concept tailored to your individual needs; with our expertise and personal consultancy, we make sure that the operation of your systems is as energy-efficient, reliable and economical as possible. All the while our competent Wilo service technicians are ready to assist you with fast, reliable and on-time support.

**We call it: Pioneering for You**

## Our services at glance:

- Supervision
- Installation
- Commissioning
- Individual and reliable maintenance concepts
- Optimisation and replacement
- Competent repair service
- Fast spare parts supply
- Extended warranty
- Service packages



**Customer Care**

**0800-2100-236  
(toll free)**

[service.id@wilo.com](mailto:service.id@wilo.com)



**Move water.  
Move the future.  
Join the evolution.**

***wilo***





**Head Office**

PT Wilo Pumps Indonesia  
Altira Business Park  
Jalan Yos Sudarso Kav. 85, Sunter Jaya  
Jakarta, 14350, Indonesia  
T +62-21-2188-2328/29/30  
[www.wilo.co.id](http://www.wilo.co.id)

**Warehouse and After Sales Service**

Jl. Agung Timur 9 Block N3 No.5,  
RT.10/RW.11, Sunter Jaya  
Jakarta, 14350, Indonesia  
T +62-21-6509-036

**Representative Office of South Sumatera**

Jl. Siaran No.17  
Sako, Kota Palembang  
Sumatera Selatan 30961  
+62-811-1712-656

**Representative Office of East Java**

Jl. Kahuripan Nirwana Monroe No.38  
Sidoarjo, Jawa Timur 61228  
+62-812-5254-4696

**Representative Office of South Sulawesi**

Jl. Cendrawasih No.497, Karang Anyar  
Kec. Mamajang, Kota Makassar  
Sulawesi Selatan 90126  
T +62-411-850-125

**Representative Office of East Kalimantan**

Kompleks Balikpapan Baru (Den Haag),  
Blok V4 No.3, Balikpapan  
Kalimantan Timur 76114  
T +62-896-3986-4555